

# Session 2:

## Local Voices, Local Change: Co-Production as a Driver of Early Years Integration



***Local Voices, Local Change: Co-Production as a  
Driver of Early Years Integration - Symposium***

**A Place-Based Early Years Common Practice  
Framework: integrating practice and research  
evidence**

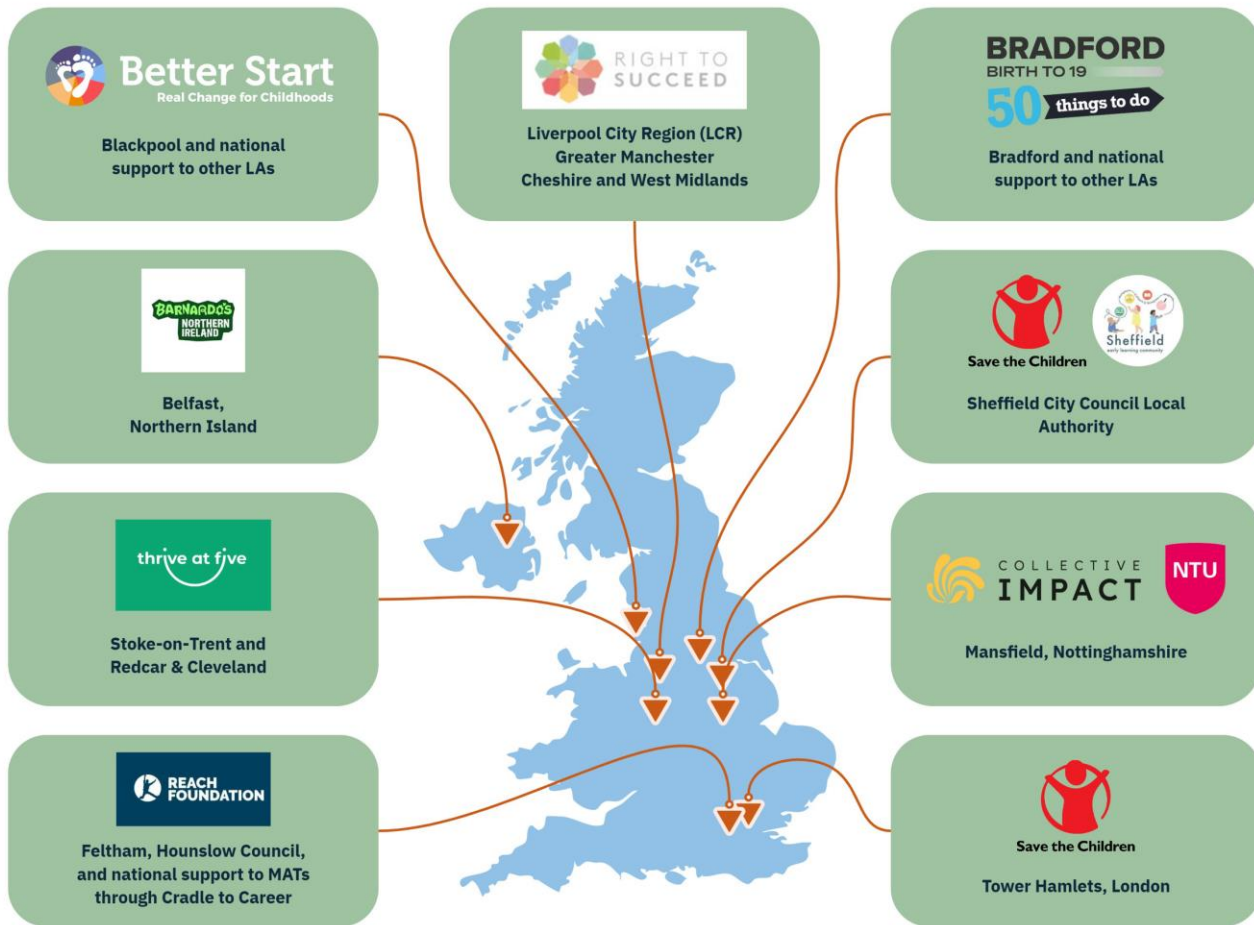


DARTINGTON  
SERVICE  
DESIGN LAB



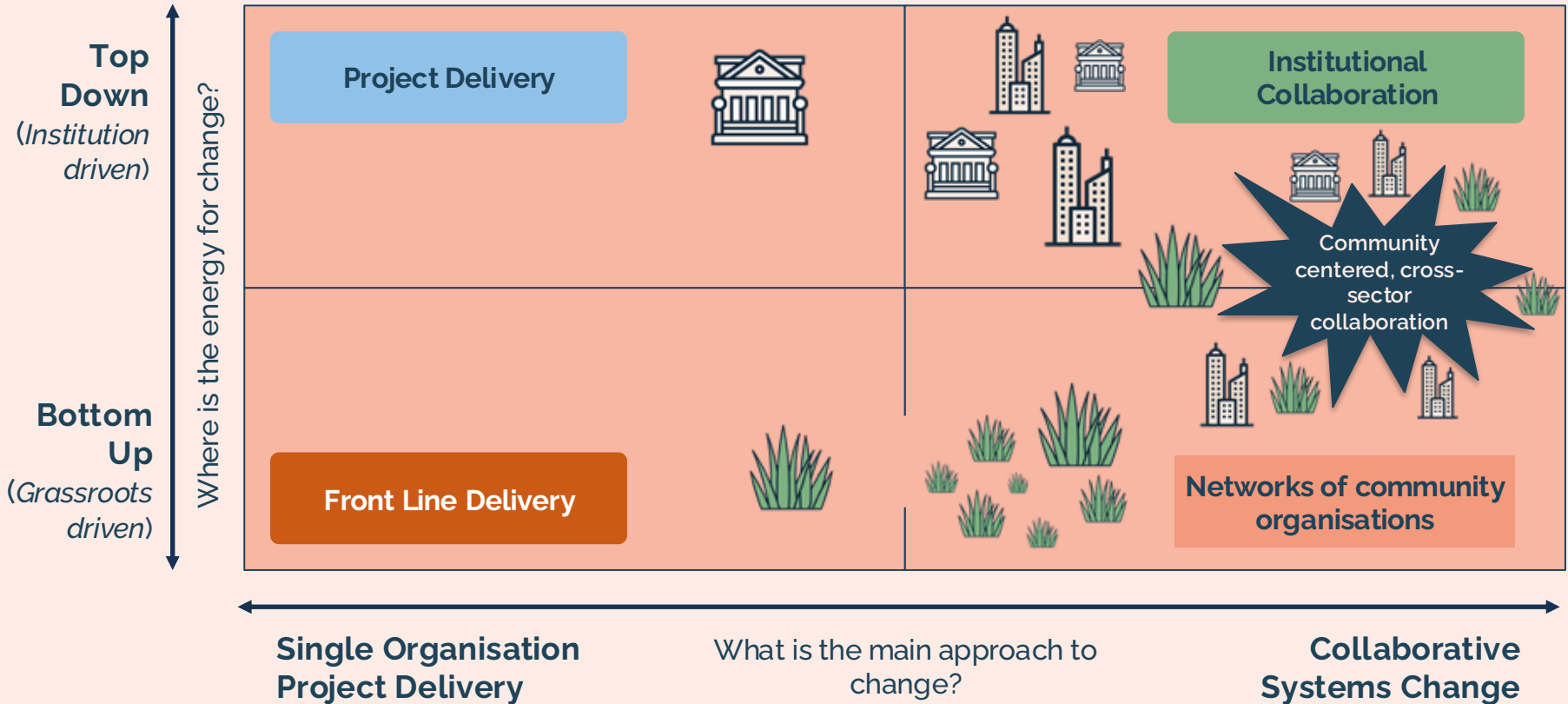
**Better Start Blackpool Conference - March 5<sup>th</sup>, 2026**

# Place-based approaches to early childhood – a community of practice



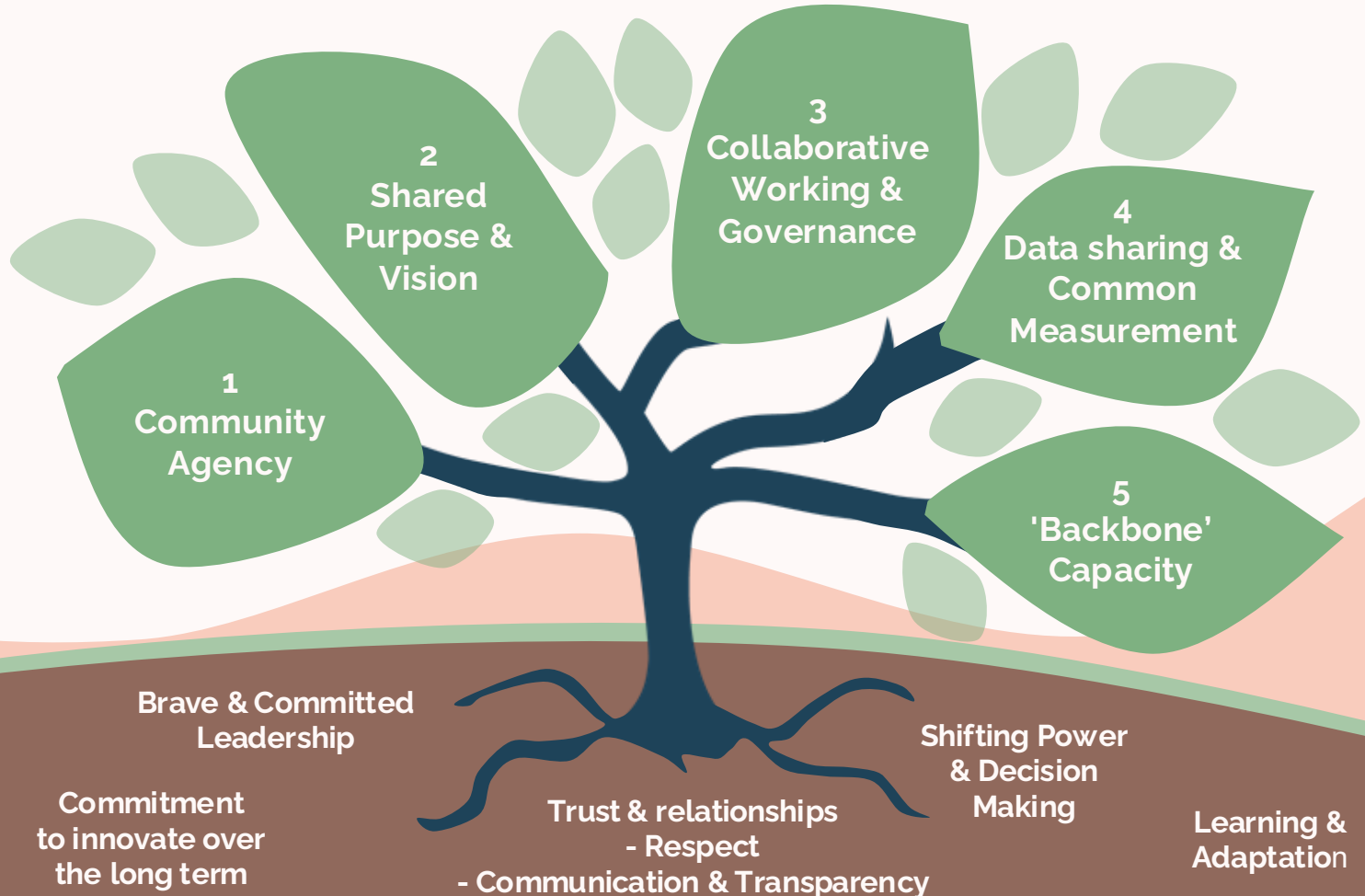


# What do we mean by place-based approaches to early childhood?

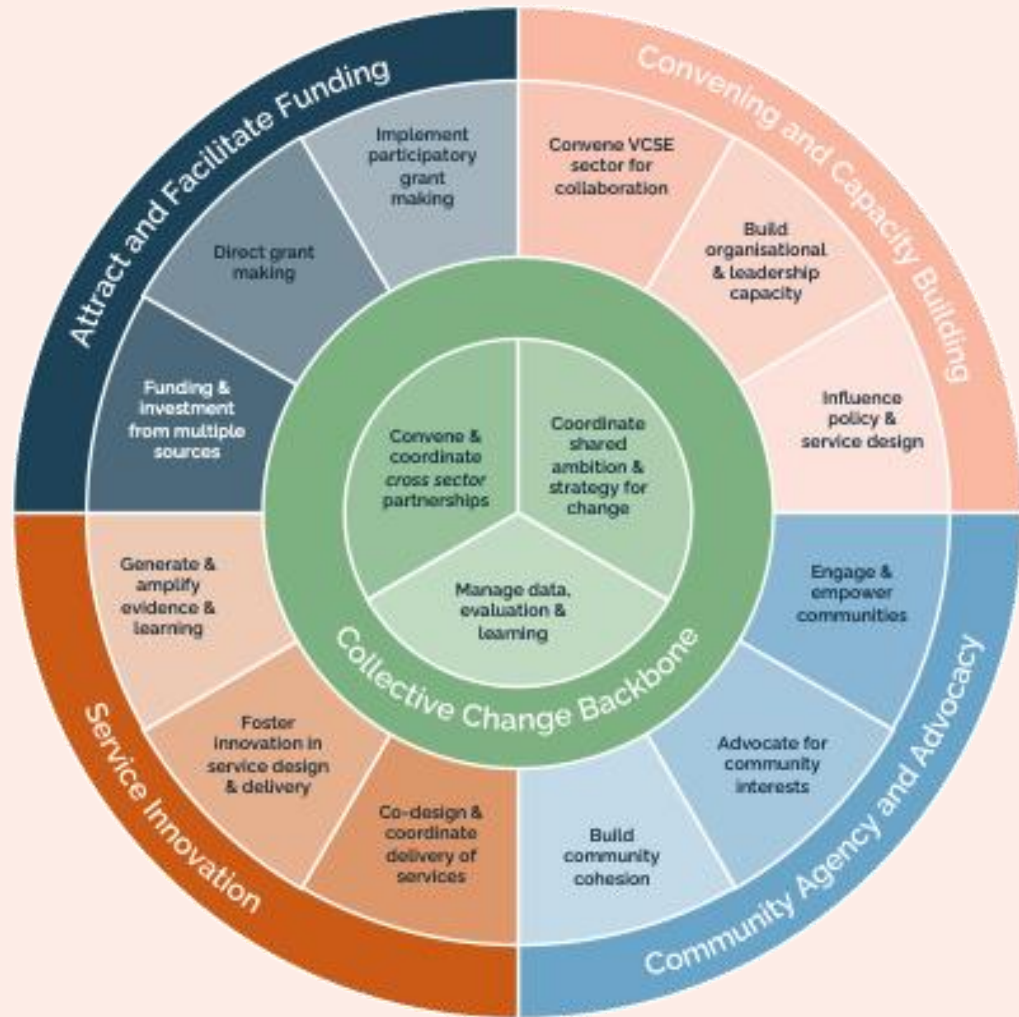




# Key features & conditions of place-based change work



# Role of a 'backbone' in place-based change





# Towards a Common Practice Framework

To understand and communicate

**"What works, for whom, in what circumstances, and why?"**

**Context:** the conditions, settings, and characteristics of participants

**Mechanisms:** the underlying processes or reasoning that generate change

**Outcome:** what actually changes as a result

## **Some key mechanisms emerging so far:**

- Deep understanding of local context and community
- Targeted universalism
- Understanding of root causes and systemic issues
- Raising parent voice
- Collaborative cross-sector partnerships and governance
- Backbone functions
- Systems-level change vs interventions



# Stages of the project

1. Co-develop a **Practice Framework** that explores "**What works, for whom, in what circumstances, and why?**"
2. Use a **Rapid Realist Review methodology** to look at **existing national and international evidence** for the identified mechanisms of change
3. Facilitate a series of **learning to action spaces** with a wider group of practitioners, funders, policy makers to **scale and deepen effective, joined up place-based practices** in early years.